



MT. ETNA & TAORMINA

FRIENDLY

WINE EXPERIENCE

Wine
Edition

a concept by Yeep Italy

WWW.WINETOUREDITION.COM

CONTACT US:

INFO@WINETOUREDITION.COM | MOB.PH. +39 375 5726663

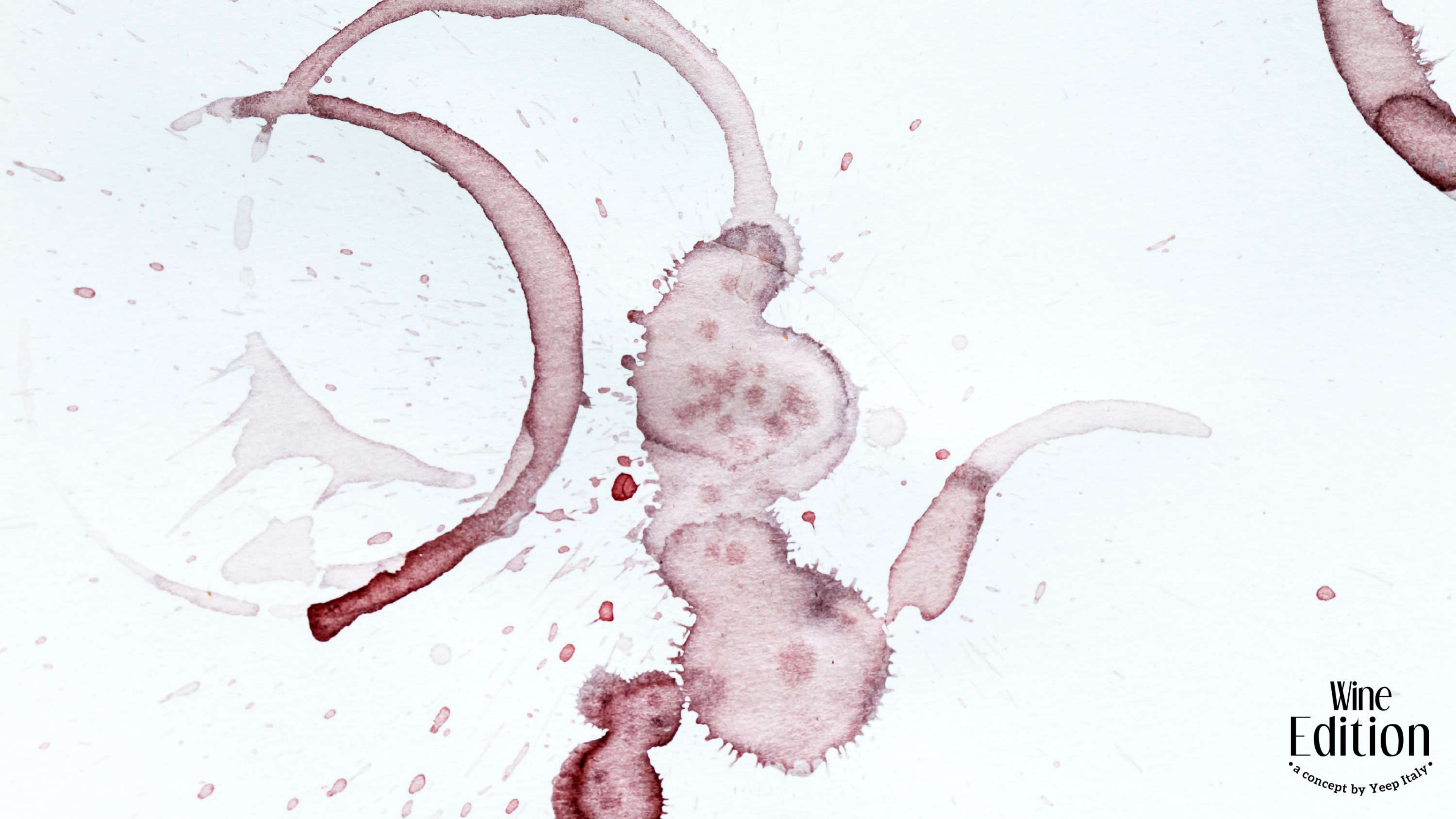


WE ARE DIFFERENT
HELLO, I AM YOUR TRUSTED SOMMELIER WHICH
SUGGESTS ALWAYS NEW AND INTERESTING
PRODUCTS AND FOOD&WINE ITINERARIES, LINKED
TO THE SICILIAN TRADITION OF TASTE.
A FRIEND WITH WHOM TO TALK ABOUT WINE, BUT
ABOVE ALL A PASSIONATE PROMOTER OF SICILIAN
WINE AND TOURISM, WITH A DEEP KNOWLEDGE OF
THE TERRITORY AND WINE TRADITIONS.
I WILL BE WITH YOU DURING YOUR TRAVEL
EXPERIENCE, CAREFUL NOT TO INVADE YOUR
PRIVACY BUT ALWAYS READY TO ANSWER ALL YOUR
QUESTIONS.

OUR TEAMS CREATES TOGETHER SOME
UNFORGETTABLE "TAILOR MADE" EXPERIENCES
FOR CUSTOMERS INTERESTED IN SICILIAN
ENOLOGY, EXPLORING THE PLACES OF
PRODUCTION, THEIR NATURAL, CULTURAL AND
GASTRONOMIC RICHNESS, HOSTED IN TOP
NOTCH HOTELS, WINERIES AND RELAIS WHICH
MEET THE HIGHEST QUALITY STANDARDS.

ARE YOU READY TO LEAVE WITH US?

**Wine
Edition**
• a concept by Yeep Italy •



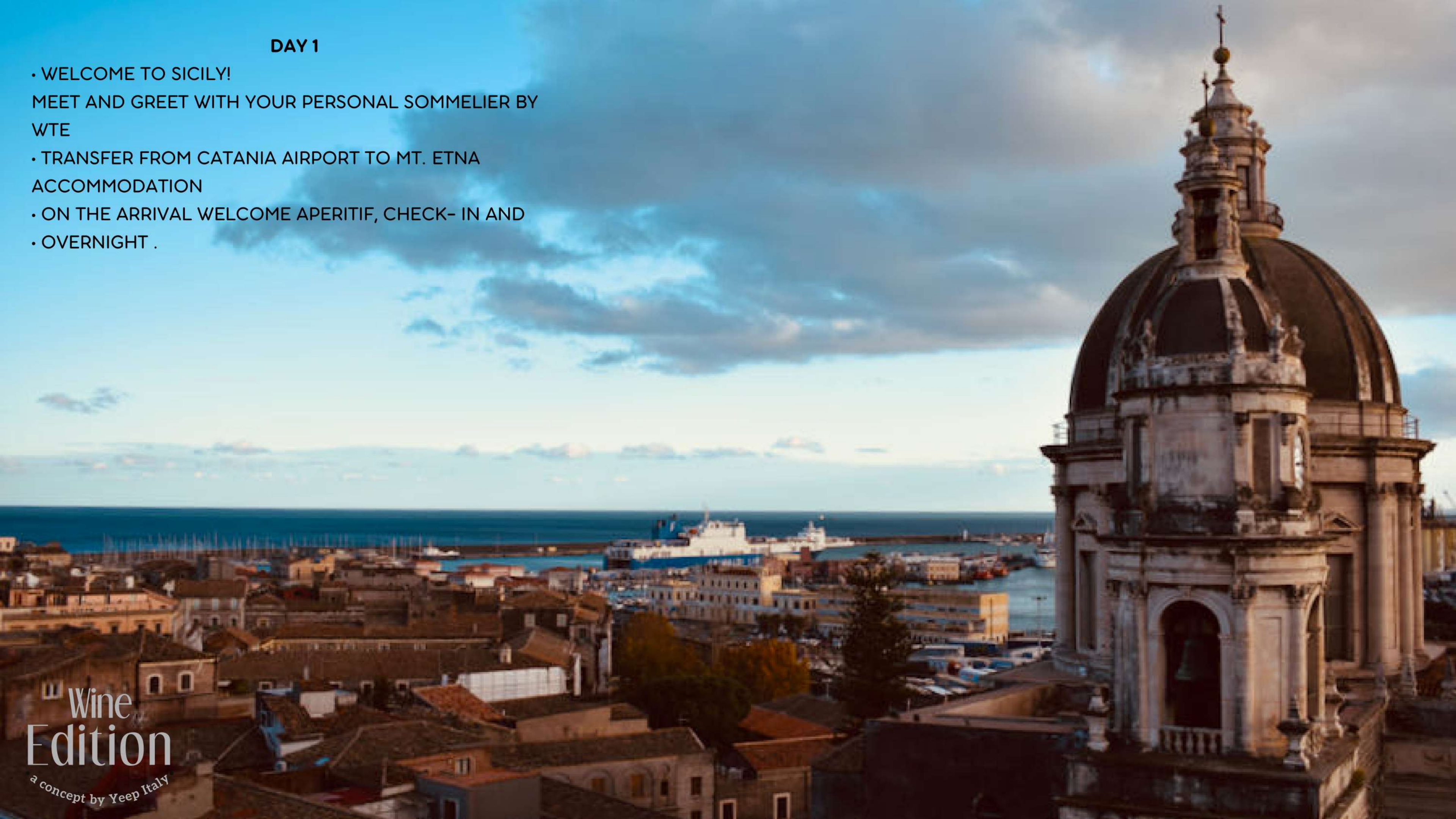
Wine
Edition
• a concept by Yeep Italy •

MOUNT ETNA

WELCOME TO THE MARVELOUS MOUNT ETNA,
THE TALLEST ACTIVE VOLCANO IN EUROPE,
ONE OF THE MOST EXTRAORDINARY AND
FAMOUS LANDMARKS OF SICILY FROM WHERE
YOU CAN ENJOY A SPLENDID VIEW OF THE
IONIAN COAST.

DAY 1

- WELCOME TO SICILY!
MEET AND GREET WITH YOUR PERSONAL SOMMELIER BY WTE
- TRANSFER FROM CATANIA AIRPORT TO MT. ETNA
ACCOMMODATION
- ON THE ARRIVAL WELCOME APERITIF, CHECK- IN AND
- OVERNIGHT .



DAY2

- BREAKFAST AT THE HOTEL/RELAIS
- TRANSFER AT THE WINERY, VISIT OF THE WINERY, AND YOUR PERSONAL SOMMELIER FOR A SPECIAL ACTIVITY: "CHALLENGE YOUR NOSE EXPERIENCE" AND (ON REQUEST/ UPON RESERVATION): CRUSHING OF GRAPES ACTIVITY.
- BARBECUE LUNCH AT THE WINERY
- AFTER LUNCH TASTING CLASS WITH YOUR PRIVATE SOMMELIER. THE REST OF THE AFTERNOON IS AT YOUR LEISURE.
- OVERNIGHT AT THE HOTEL



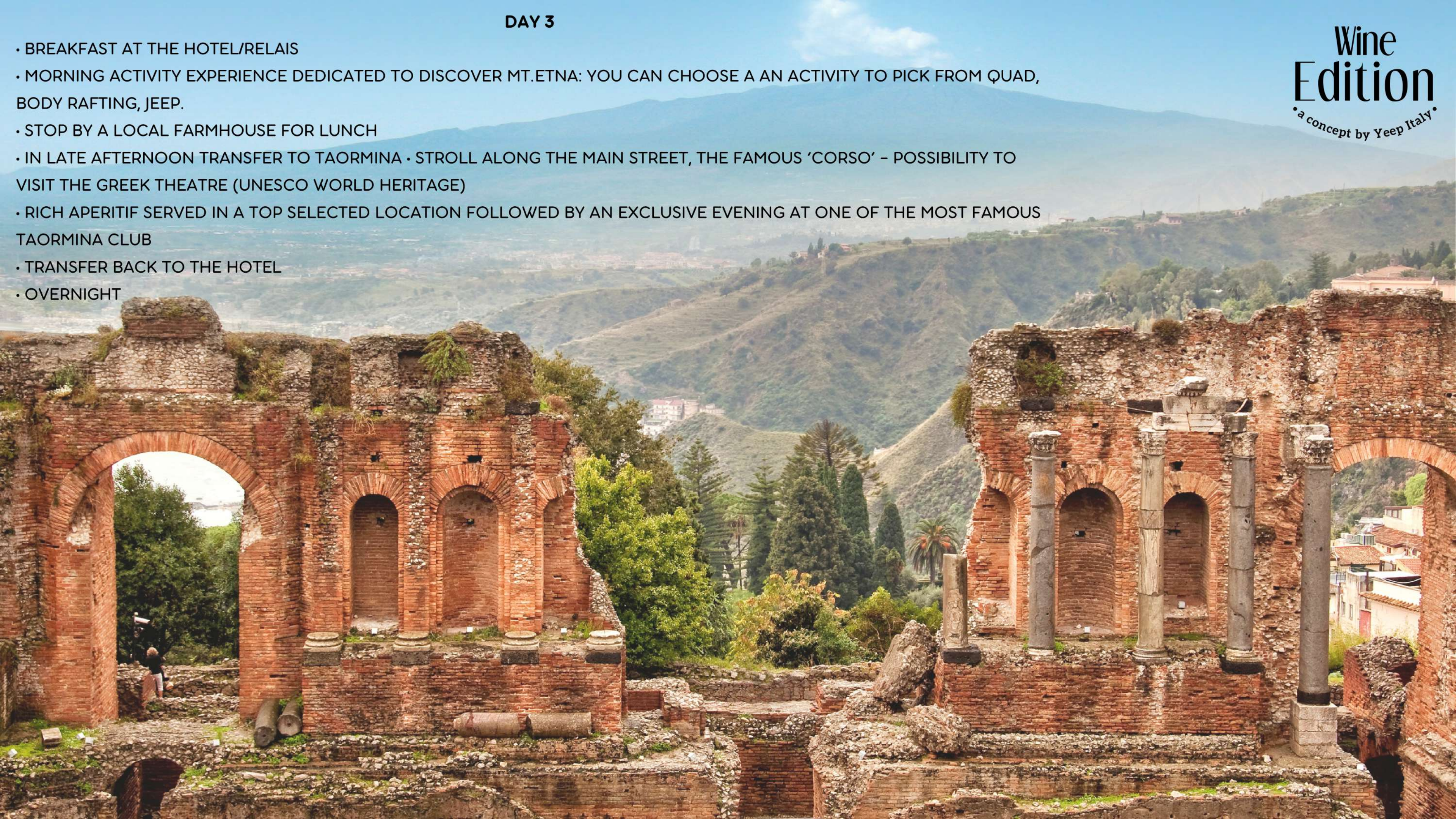


Wine
Edition
• a concept by Yeep Italy •

DAY 3

Wine
Edition
• a concept by Yeep Italy •

- BREAKFAST AT THE HOTEL/RELAIS
- MORNING ACTIVITY EXPERIENCE DEDICATED TO DISCOVER MT.ETNA: YOU CAN CHOOSE A AN ACTIVITY TO PICK FROM QUAD, BODY RAFTING, JEEP.
- STOP BY A LOCAL FARMHOUSE FOR LUNCH
- IN LATE AFTERNOON TRANSFER TO TAORMINA • STROLL ALONG THE MAIN STREET, THE FAMOUS 'CORSO' – POSSIBILITY TO VISIT THE GREEK THEATRE (UNESCO WORLD HERITAGE)
- RICH APERITIF SERVED IN A TOP SELECTED LOCATION FOLLOWED BY AN EXCLUSIVE EVENING AT ONE OF THE MOST FAMOUS TAORMINA CLUB
- TRANSFER BACK TO THE HOTEL
- OVERNIGHT

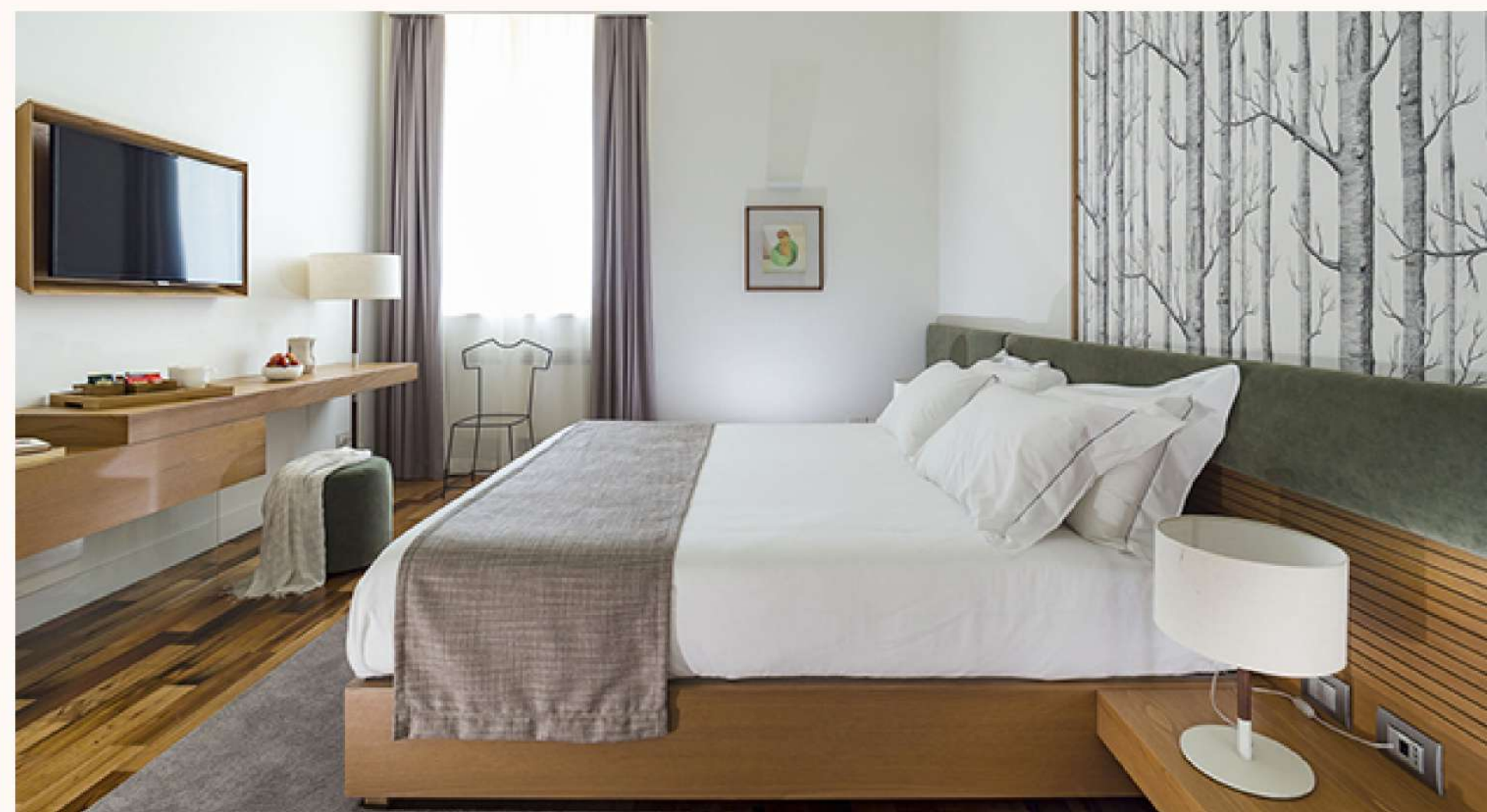
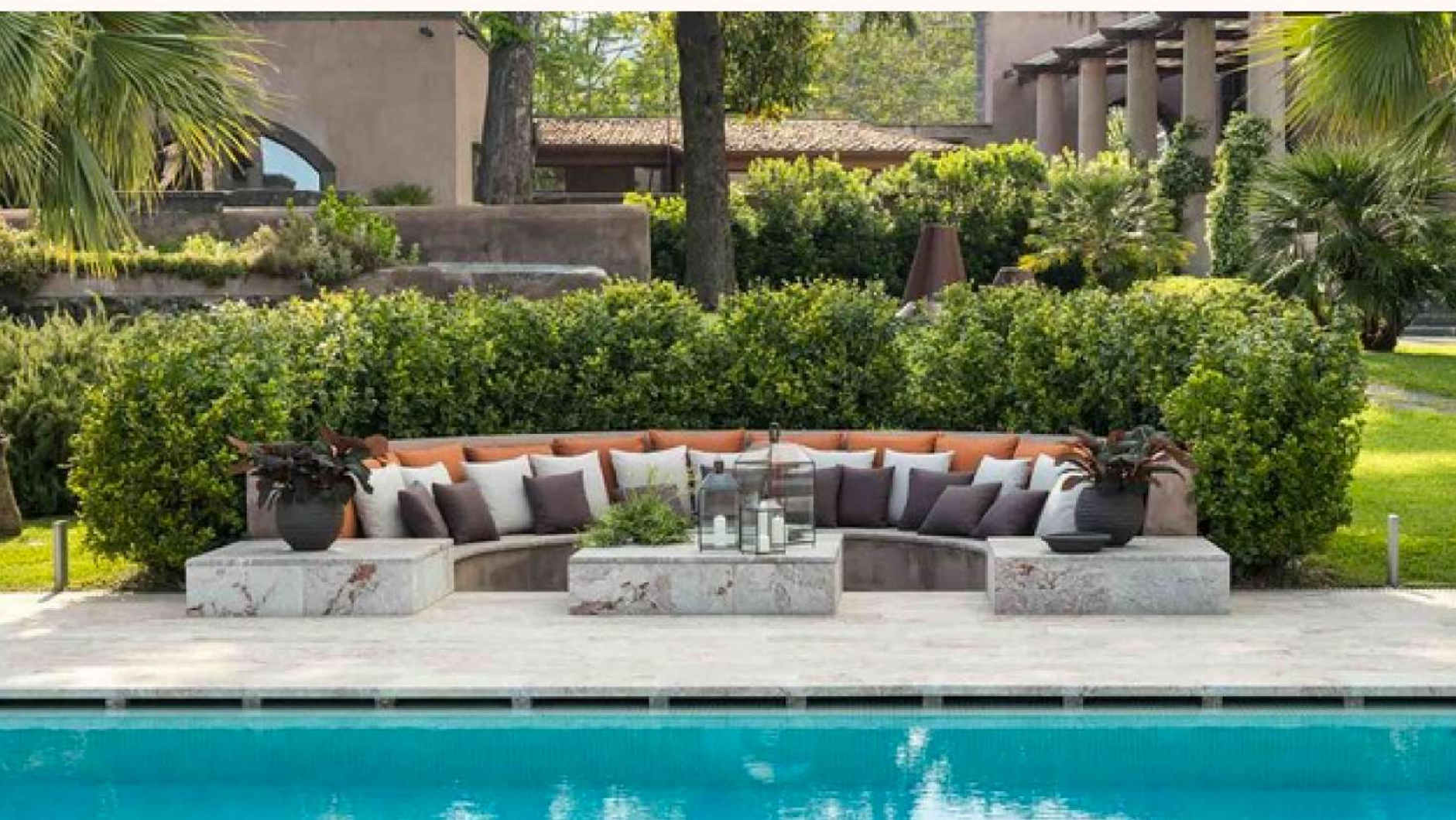




Wine
Edition
a concept by Yeep Italy



Wine
Edition
• a concept by Yeep Italy •



DAY 4

- BREAKFAST AT THE HOTEL AND CHECK-OUT. • ON REQUEST, DEPENDING ON TIME OF THE FLIGHT:
- TRANSFER TO CATANIA AND EXPERIENCE 'URBAN TREKKING: A LAVIC CITY TO DISCOVER' • STREET FOOD LUNCH BY THE FAMOUS FISH MARKET 'LA PESCHERIA'
- DEPARTURE

- ✓ Pistacchio di Bronte Certificato
- ✓ Capperi di Pantelleria IGP - Cucunci
- ✓ Pomodori Secchi di Ispica e Pachino
- ✓ Cioccolato di Modica
- ✓ Latte di Mandorla
- ✓ Vino alla Mandorla
- ✓ Bottarga di Tonno
- ✓ Acciughe sotto sale
- ✓ Sale di Trapani all'Arancia e Limone
- ✓ Miele e Marmellata dell'Etna
- ✓ Limoncello dell'Etna
- ✓ Rosolio di Pistacchio

OPTIONAL ACTIVITIES (WITH SUPPLEMENT)

HORSEBACK RIDING

- HD GUIDED TOUR OF A CULTURAL/ HISTORICAL INTEREST PLACE
- COOKING CLASS
- OLIVE HARVEST (AVAILABLE ONLY IN OCTOBER AND TBC)
- VISIT OF TYPICAL FARM - RICOTTA CHEESE MAKING

IMAGES ARE FOR ILLUSTRATIVE PURPOSES ONLY

Wine
Edition

• a concept by Yeep Italy •



RETAIL PRICE PER PERSON:

2 PPL – ON REQUEST

FROM 4 TO 6 PPL: 4.490,00€

FROM 7 TO 12 PPL: 3.990,00€

WHAT'S INCLUDED.

- WELCOME AND ASSISTANCE AT THE AIRPORT
- PRIVATE TRANSFER FROM APT CTA TO THE HOTEL/RELAIS/WINERY AND FINAL TRANSFER WELCOME APERITIF
- 3 OVERNIGHT STAY IN SUPERIOR DBL ROOM – BB BASIS
- CAR, MINIVAN OR MINIBUS GT WITH A/C AS PER ITINERARY FOR 4 DAYS
- PARKING AND CHECK POINTS
- ACCOMPANYING STAFF (INCLUDING 1 DRIVER-ESCORT AND A SOMMELIER DURING ACTIVITIES/TASTINGS)
- ACTIVITIES AS PER ITINERARY + WINE TASTINGS AT SELECTED WINERIES
- 1 BARBECUE LUNCH AT THE WINERY
- 1 PAIRING LUNCH AT THE WINERY
- 1 ADVENTUROUS AND FUN ACTIVITY ON ETNA
- A FAREWELL "APERI-DINNER" FOLLOWED BY AN EVENING IN ONE OF THE MOST FAMOUS TAORMINA CLUB
- AN EXCLUSIVE 2H. VISIT WITH PRIVATE LOCAL GUIDE IN TAORMINA
- ENTRANCE FEES (MONUMENTS/ARCHAEOLOGICAL SITES/MUSEUMS INCLUDED IN THE PROGRAM)
- VAT

PRICE DO NOT INCLUDE:

- ARRIVAL/DEPARTURE FLIGHTS
- TIPS, PORTERAGE AND EXTRAS IN GENERAL.
- TOURIST TAX, WHERE APPLICABLE (TO BE PAID ON THE SPOT) EVERYTHING NOT INCLUDED IN THE VOICE "PRICE INCLUDES"
- OR NOT MENTIONED ON THE PROGRAM
- OPTIONAL ACTIVITIES AND EXCURSIONS

GENERAL CONDITIONS AND TERMS OF PAYMENT

FOOD & BEVERAGE

MEALS ARE ALWAYS PAIRED WITH SELECTED WINES AND WATER IS ALWAYS INCLUDED.

SERIOUS FOOD PROBLEMS SUCH AS ALLERGIES SHOULD BE REPORTED ALREADY AT THE TIME OF BOOKING.

STAYS

THE HOTELS PROVIDED ARE ALL 4-STAR SUPERIOR AND CAN BE THOSE INDICATED IN THE PROGRAM OR SIMILAR.

THE FINAL HOTELS PLANNED FOR THE TRIP WILL BE INDICATED, WITH ADDRESS AND TELEPHONE NUMBER, IN THE NEWS SHEET THAT WILL BE SENT 15 DAYS BEFORE DEPARTURE.

AT THE TIME OF BOOKING MUST BE SPECIFIED IF CUSTOMERS IN DOUBLE ROOM WANT DOUBLE BED OR TWIN BEDS.

PLEASE NOTE: THE PROGRAM COULD BE SUBJECT TO CHANGE ACCORDING TO THE NEEDS OF TECHNICAL ORGANIZATION BY NOT CHANGING THE CONTENT.

RATES

ALL RATES ARE NET AND ARE EXPRESSED IN THE LOCAL CURRENCY (EURO).

METHODS OF PAYMENT

AT THE TIME OF CONFIRMATION, A DEPOSIT OF 25% MUST BE PAID UPON COMPLETION OF THE RESERVATIONS MADE; THE BALANCE FOR THE PAYMENT OF ALL THE SERVICES REQUESTED MUST BE MADE BY BANK TRANSFER NO LATER THAN 20 DAYS BEFORE THE BEGINNING OF THE BOOKED SERVICES.



WWW.WINETOUREDITION.COM

CONTACT US:

INFO@WINETOUREDITION.COM | MOB.PH. +39 375 5726663